



FOR SALE

75 KING STREET S, WATERLOO

\$99,000

\$4,500 Gross Rent

1,000 Sq Ft

QSR Franchise

ODD BURGER - WATERLOO

Odd Burger presents an excellent opportunity to acquire a strong-performing corporate store in the heart of Uptown Waterloo. Known for its modern, plant-forward menu and consistent sales, the franchise offers full training and support, with the flexibility to keep the brand or convert the space to a new concept.

Situated in a prime high-traffic area surrounded by shopping, offices, transit, and dining, this location benefits from exceptional visibility and steady daily activity. With 100+ parking spaces nearby and excellent pedestrian flow, it sits in one of Waterloo's most vibrant districts.

The 1,000 sq ft unit is a recent, high-quality build-out constructed to the newest franchise standards. The lease is very attractive at \$4,500 gross including TMI with a long 10 + 5 + 5 year term, and royalties of 5% + 2.5%. This is a turnkey, efficient, and well-positioned space ideal for both franchise operators and those seeking a ready-to-go location for their own brand.

READY FOR SECONDS?

Call me to discuss this listing today.



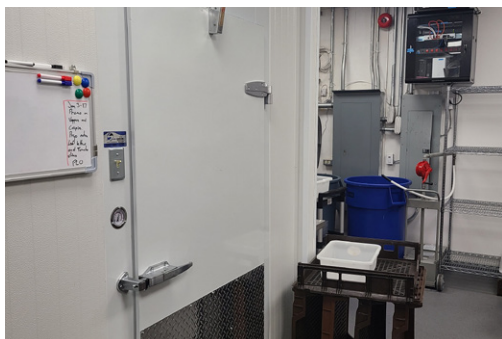
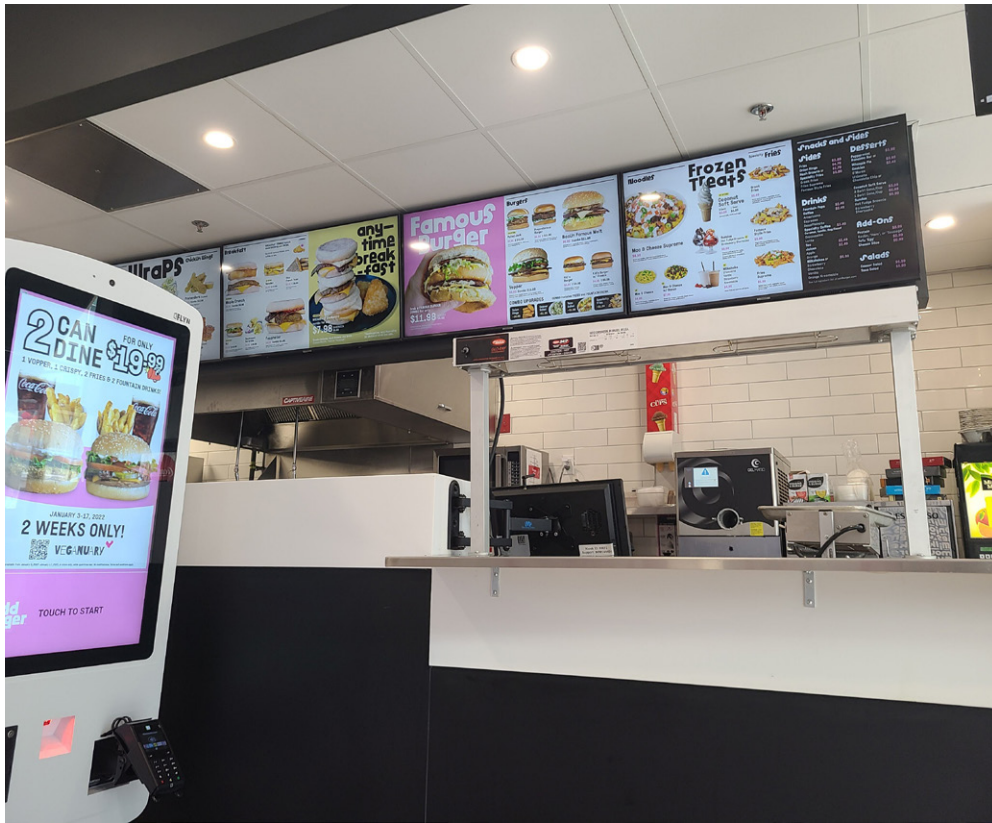
RYAN EARL, Broker and Founder
416-618-0054
ryan@carverestate.com
carverestate.com

LES MILBORN, Sales Representative
416-848-1166
les@carverestate.com
carverestate.com

Royal LePage® Signature Realty
Ind. Owned & Operated Brokerage
495 Wellington St W Suite 100, Toronto, ON M5V 1E9

This document is not meant to solicit existing listings. (12.2002)

carve REAL ESTATE



RYAN EARL, Broker and Founder
 416-618-0054
ryan@carverestate.com
carverestate.com

LES MILBORN, Sales Representative
 416-848-1166
les@carverestate.com
carverestate.com

Royal LePage® Signature Realty
 Ind. Owned & Operated Brokerage
 495 Wellington St W Suite 100, Toronto, ON M5V 1E9
 This document is not meant to solicit existing listings. (12.2002).



OTHER LOCATIONS:



ODD BURGER - HAMILTON

- Quick Service Restaurant
- 1,200 Sq Ft
- \$2,435 Gross Rent
- Seating for 16



MOLTO BENE

- Quick Service Restaurant QSR
- 1,100 Sq Ft
- \$3,097 Gross Rent
- Seating for 25



WING CITY

- Quick Service Restaurant QSR
- 1,599 Sq Ft
- \$6,129 Gross Rent
- Seating for 20

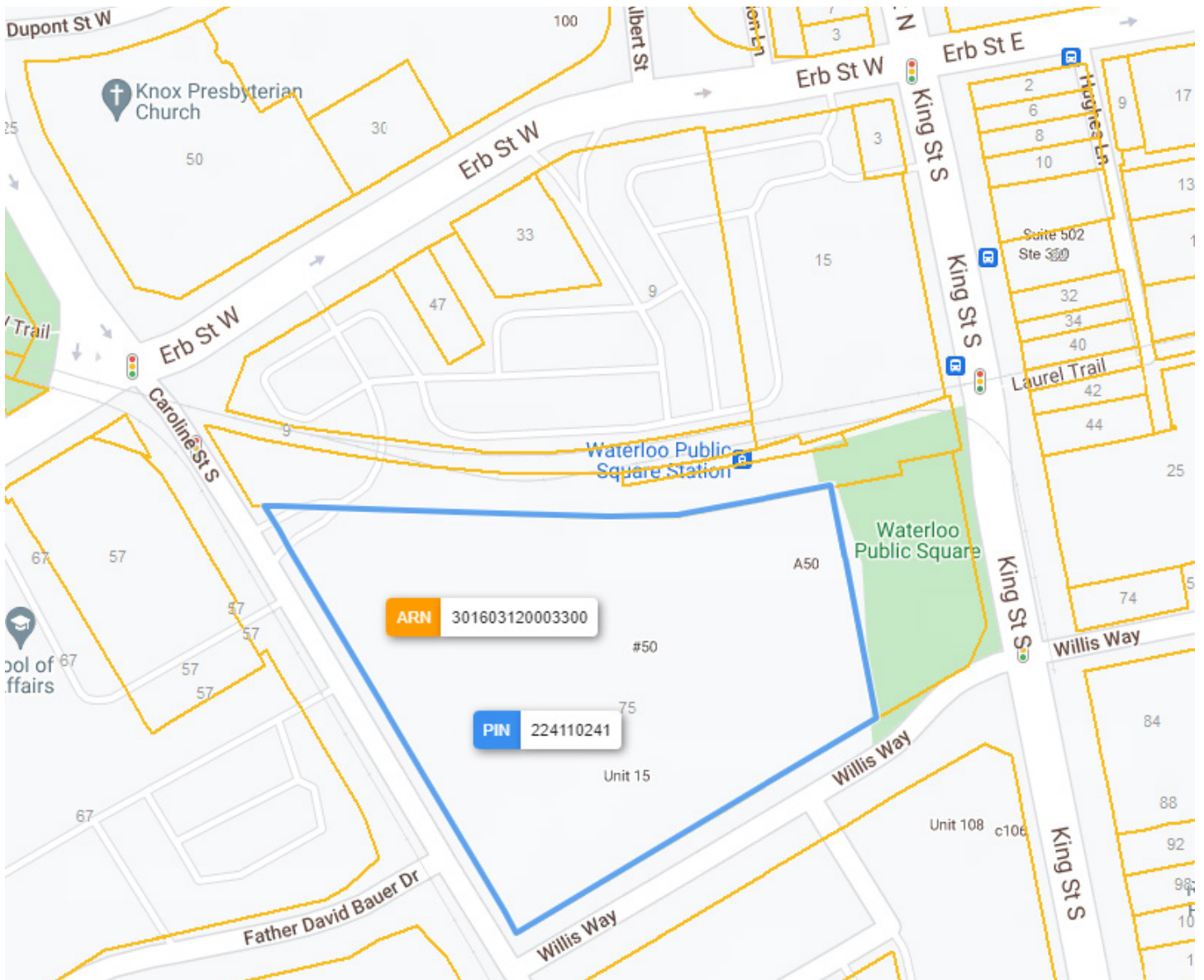


RYAN EARL, Broker and Founder
416-618-0054
ryan@carverealestate.com
carverealestate.com

LES MILBORN, Sales Representative
416-848-1166
les@carverealestate.com
carverealestate.com

Royal LePage® Signature Realty
Ind. Owned & Operated Brokerage
495 Wellington St W Suite 100, Toronto, ON M5V 1E9
This document is not meant to solicit existing listings. (12.2002).

carve REAL ESTATE

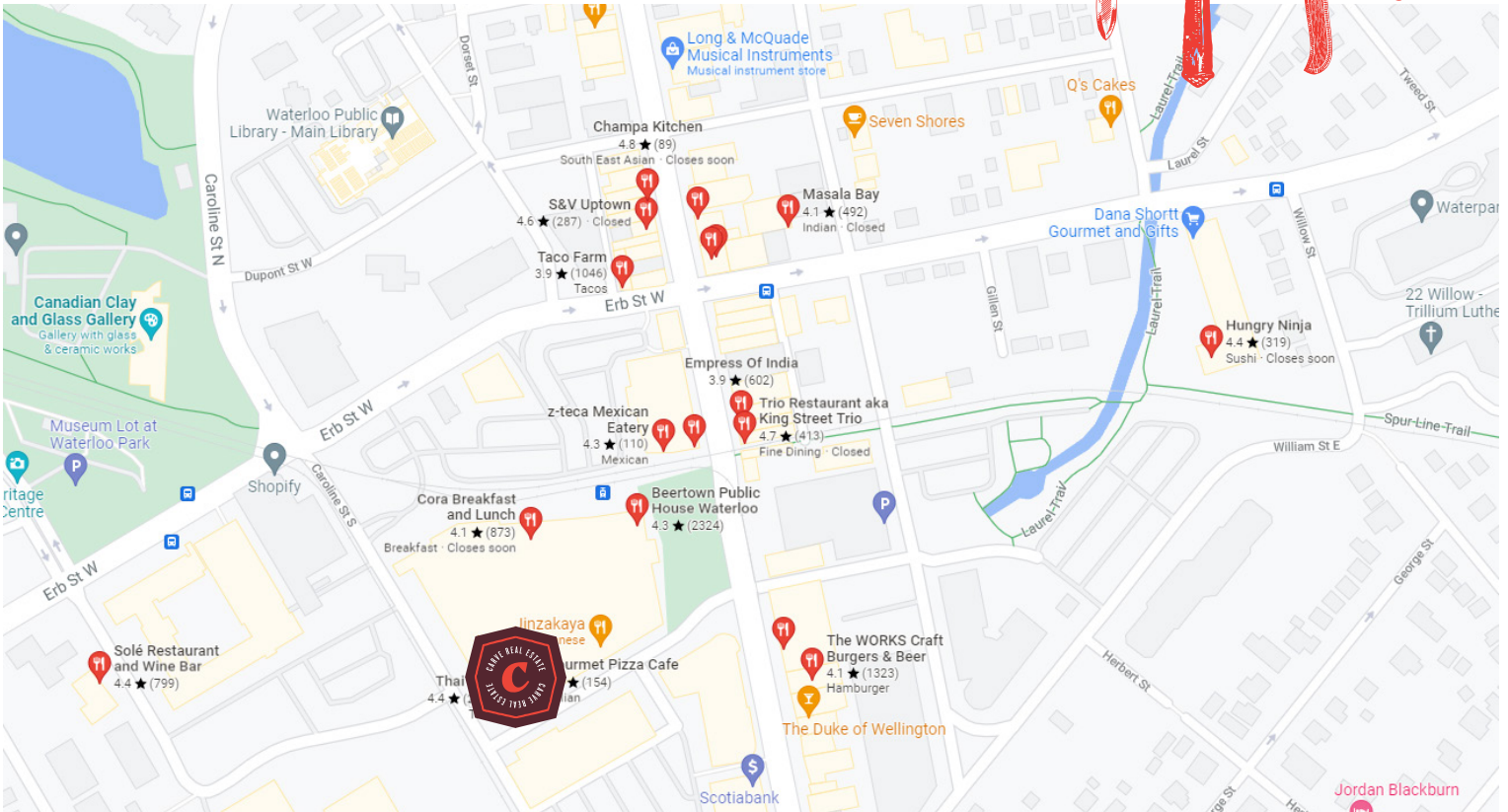


RYAN EARL, Broker and Founder
416-618-0054
ryan@carverestate.com
carverestate.com

LES MILBORN, Sales Representative
416-848-1166
les@carverestate.com
carverestate.com

Royal LePage® Signature Realty
Ind. Owned & Operated Brokerage
495 Wellington St W Suite 100, Toronto, ON M5V 1E9

This document is not meant to solicit existing listings. (12.2002).



BUILDING DETAILS

Uptown Waterloo is what they call it, however it's really the downtown for the entire Kitchener-Waterloo metropolis. This is where the most restaurants are located, the most parking lots, transit, and foot traffic.

You are surrounded by the areas AAA operators, the biggest brands, franchises, and more.

Property Details: Completely modern buildout that is to spec for the new stores in this rapidly expanding international franchise. Excellent rental rates combined with a typical QSR layout ideal for minimizing labour costs. Seating for 8 with an open concept commercial kitchen and hood system. Ordering pylon screens for customer orders.

LOT SIZE

Frontage:

226.77 ft along King St S

Depth:

Approximately 402.52 ft

Dimensions:

23.80 ft x 402.52 ft x 226.77 ft x
149.84 ft x 398.33 ft x 452.03 ft

Size:

150,059.53 ft² (3.445 ac)

Perimeter:

1,650.26 ft

Lot Measurement Accuracy:

LOW



RYAN EARL, Broker and Founder
416-618-0054
ryan@carverestate.com
carverestate.com

LES MILBORN, Sales Representative
416-848-1166
les@carverestate.com
carverestate.com

Royal LePage® Signature Realty
Ind. Owned & Operated Brokerage
495 Wellington St W Suite 100, Toronto, ON M5V 1E9

This document is not meant to solicit existing listings. (12.2002).